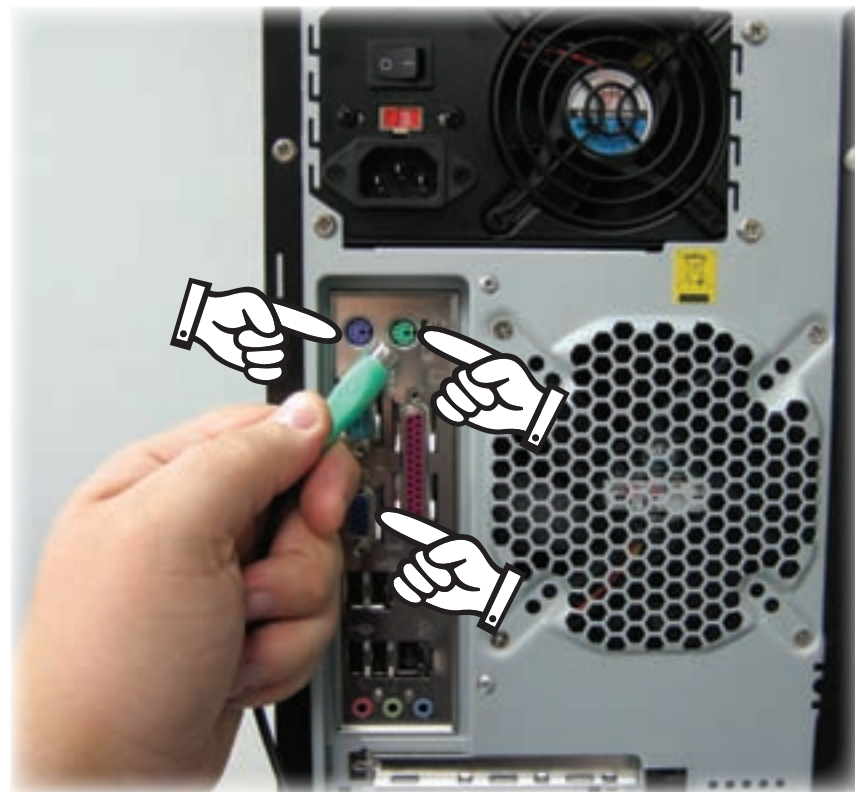


- ① Carefully remove all parts from packaging.



- ② Connect all cables.
Ports and cables are color-coded.



- ③ Optional Add-On towers should be connected to the #1 USB port.



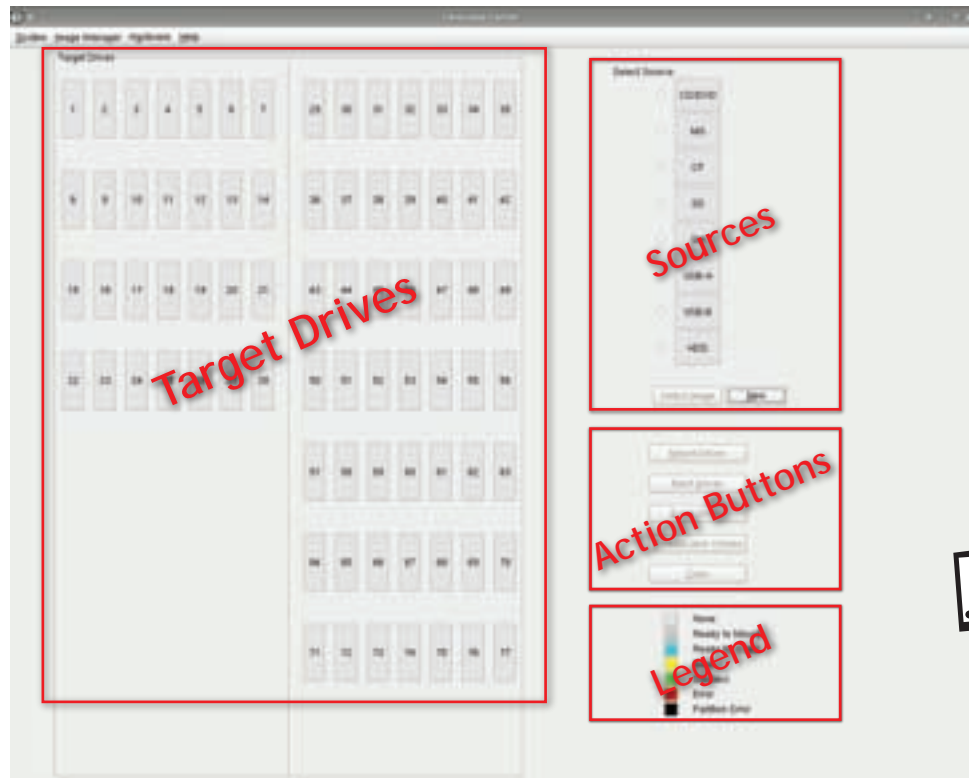
i Be sure to connect to #1 USB Port

- ④ Turn on monitor and tower. After boot up, software will launch automatically.

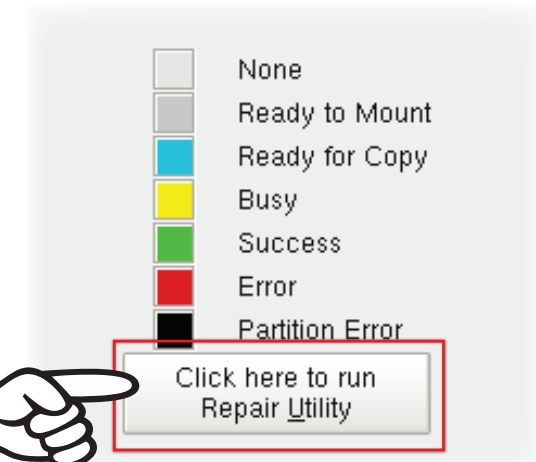


(Flip over for software Quick Start)

① Overview

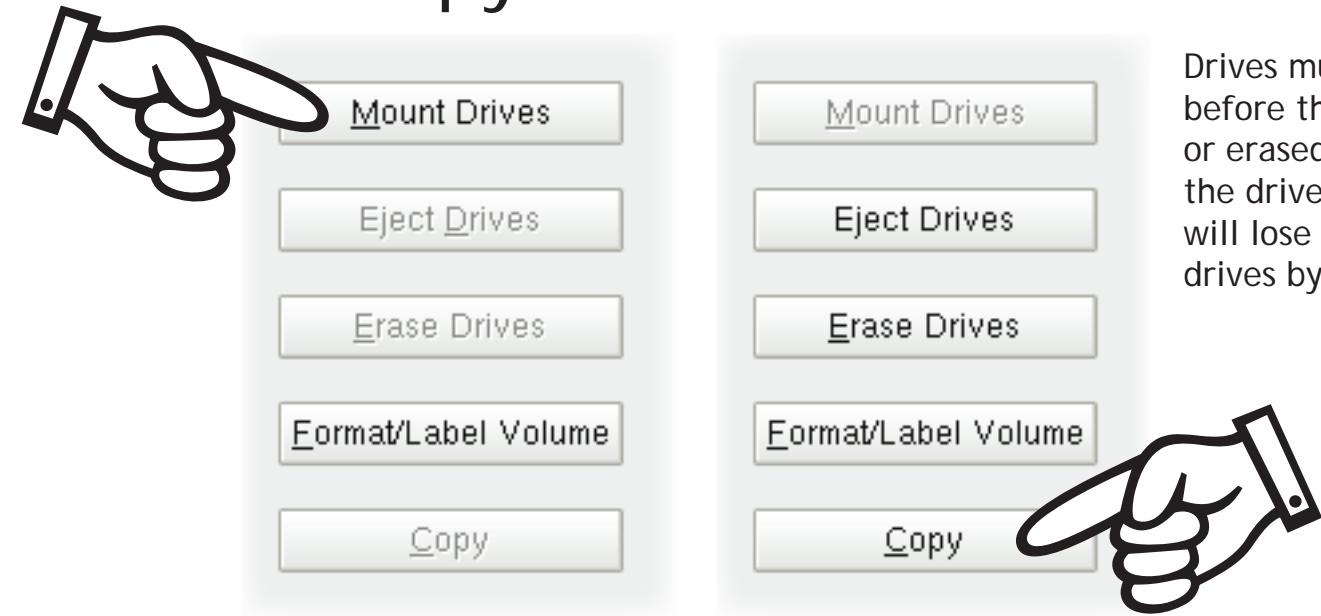


Insert drives into the tower and the corresponding target drive will change color



i If drive(s) appear black, you can repair them by clicking the repair utility

③ Mount your target drives Press copy button

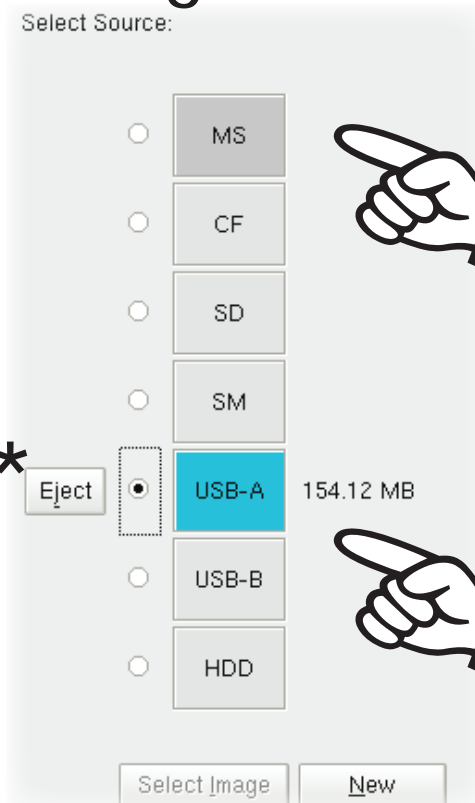


Drives must be mounted before they can be copied or erased. You can format the drives at any time. You will lose data on target drives by formatting.

i Do not remove drives that are marked ■ Ready for Copy ■ Busy

* Before removing drives click

② Insert your master and select the corresponding source



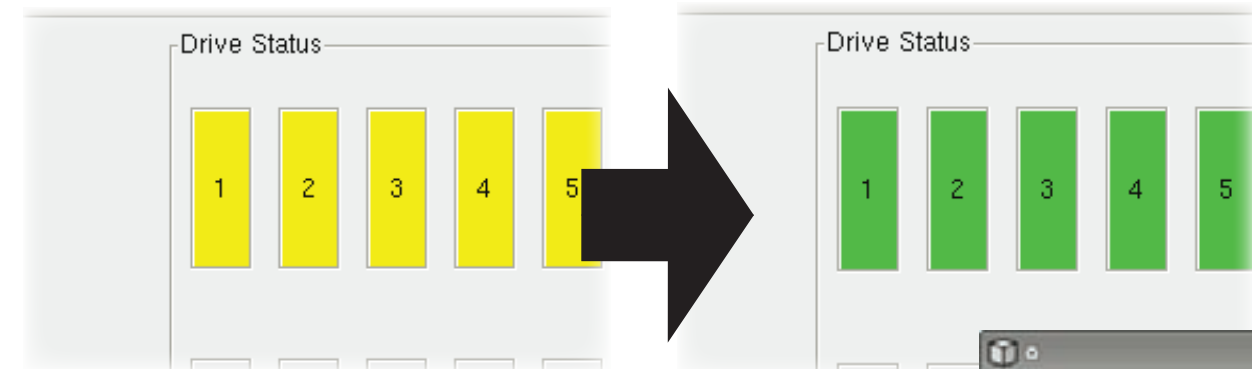
i Available sources appear grey.

i Selected sources appear blue.

*Be sure to click EJECT before removing source drive.

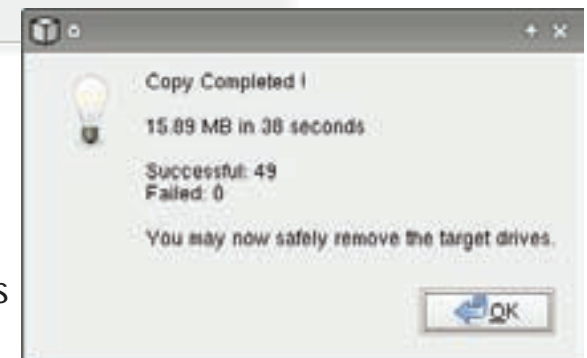
④ Copy Drives

Target drives will turn yellow while copying then green when finished.



Copy time depends on the speed of your target drives and size of your master.

A dialog box confirms that copy completed



i You can safely remove drives when they are marked ■ Success